



TEXAS KNIGHTS

Official Bulletin of the Texas Chess Association

VOL. XVII, Number 1

Sept.-Oct. 1975

ENGBRETSON IS PRESIDENT, HENLEY IS CHAMPION

194 ATTEND S.W. OPEN

San Antonio hosted its largest tournament ever August 30, 31 and September 1 at the Sheraton Inn. Nearly 200 players from all walks of life and many parts of the world entered to compete for a \$2500 prize fund and, more importantly, the honor of smashing each other on the chessboard. It was great!

There were 6 masters and 37 rated Class 'A' or above plus a whole host of stalwart veterans and young comers. Freaks and businessmen, old and young--all with the consuming passion to PLAY CHESS!

Seven tough rounds were played, plus innumerable five-minute games, plus many learned and not-so-learned chess tomes were sold by two dealers, plus the annual T.C.A. Business Meeting was held. Plus?--were you there?

When the dust, or whatever it was, had settled, there was a five-man tie for first place at the Southwest Open and a majority vote for Larry Englebretson for President of the Texas Chess Association.

The top five split \$1250, but Ron Henley got the first place trophy on median tie breaking points.

SOUTHWEST OPEN RESULTS

First: Ron Henley (2219), Robert Atlas (2082), John Dunning (2305), John Jacobs (2330), and Steve Spencer (2259) had 6 pts.

Class 'A': Tom Cunningham (1885), Robert Brieger (1936), Cesar Parreiras-Horta (1882), and Fred Payne (1996) had 5-1/2 pts.

Class 'B': Frank Todaro (1704) took clear first with 5-1/2 pts. At 5 each were Frank Alejandro, Joe Cash, Zack Coombes, James Gray, Arthur Kimes, Steve Lynn, Dante Pingnot, and Mevis Smith.

Class 'C': Howard Hudspeth and John Lowe had 4-1/2 pts. while Robert Arthur, Frank Brack, Jim McKone, Robert Toellner, Joshua Turin, Gary West, and Wilson Neil had 4 pts.

Classes 'D-E': Roy Webb, Larry Fullbright, P. H. Schaefer, and James Wharton had 4 pts.

Unrated: Carlos Pulidos of Colombia took clear first with 5-1/2 pts while Richard Whedbee scored 5 pts. Steve Bielagus and Jack Ligon tied for third with 4 pts. when another player, who had been credited with 4-1/2, confessed (because his conscience was bothering him) that his last win had been arranged.

Other good scores: Ken Smith (2399) 5-1/2, John Ragan (2094) 5-1/2, Bill Reuter (2008) 5, Larry Englebretson (2002) 5, Lewis McClary (1963) 5, Nathan Cypert (1958) 5, Lee Gas-kill (1941) 5, Jess Goodman (1851) 5, William Coe (1842) 5, Pat Gannon (1836) 5, and Kevin Hammon (1820) 5. International Master Campos-Lopez of Mexico scored 4-1/2 out of 5--he missed the first round and withdrew before the last round. There was some unhappiness about the pairings, especially the lateness thereof. Pete Prattes and Art Riley are fine organizers but it was apparent that they need a professional tournament director and team of helpers to work events this big.



Jack Spence
Jack Spence

REPORT ON T.C.A. BUSINESS MEETING

President Clarence Callaway called the 1975 T.C.A. Meeting to order at 6:30 p.m. August 30. Secretary Bill McCarty read the Minutes and they were approved by the gathered membership of about 150.

Callaway announced that T.C.A. had grown slightly, to over 750 members, despite some problems affecting all of chess such as the Fischer disappointment and economic inflation. This is still considerably below T.C.A.'s highwater mark of 1100 members but at least a turn-around has started. Tournament activity continued at its normal pace but postal chess seems to be off a little compared to 1974.

Vice President Jack Taylor explained that the T.C.A. Tournament Calendar published in Texas Knights is for the benefit of organizers. Please continue to clear your tournament dates with Jack 4 or 5 months in advance so that conflicts can be avoided. The Lubbock Chess Association has cancelled all its tourneys for the rest of 1975.

Secretary-Treasurer McCarty announced that T.C.A. has gained about \$300 since last year.

Ken Smith commended Lindsey Phillips, Pete Prattes, Lynn Babcock, and Texas in general; then announced that his 1975 Award for Promotion of Texas Chess would go to Tom Weaver, the T.C.A. editor, "for what he can do for Texas chess."

Callaway accepted bids for the four annual T.C.A. biggies with the following results:

Texas Champ. and Amateur	- Andy Lattu, Midland
Texas Junior	- Lynn Babcock, Houston
S.W. Open	- Art Riley, San Antonio
Texas Open	- Tom Weaver, Corpus Christi

Midland promised to offer \$3,000 prize fund.

Election of T.C.A. Officers began with the nomination by Art Riley of Callaway for a third consecutive term. Fred King nominated well known Houston expert Larry Englebretson. The nominees left the room and a hand vote was counted by McCarty and Taylor which indicated a preference for Larry. A standing ovation was given to Clarence for his fine work in behalf of Texas chess. Englebretson took the podium.

Callaway refused nomination for Vice-President and Jack Taylor was re-elected without opposition. Bill McCarty was re-elected Secretary-Treasurer unanimously with the comment by Prattes, "he's the best secretary-treasurer T.C.A. has ever had." Englebretson did not announce any new appointments to the other offices.

Texas Junior Chess Director Lindsey Phillips proposed that until December 31, 1975, T.C.A. should offer a \$2 membership to new juniors. It passed unanimously and is expected to help Lindsey's high school membership drive in El Paso.

Ron Abplanalp appealed for the help of the T.C.A. in getting a regular schedule of tournaments started in Dallas. Prattes said that he felt all chess organization was done by individuals and someone living in Dallas needs to take it on themselves to get things rolling. Weaver asked for suggestions from the T.C.A. membership. Ken Smith said that Callaway is trying but lost \$200 on the Lone Star Open--he asked for the membership to support Clarence's next effort. After the meeting Tom Cunningham said that he is planning to hold some Dallas tournaments.

Bill McCarty commended the nine USCF Delegates from Texas for their good work. He then moved, for Lynn Babcock, that the Texas Womens' Championship and that the Texas Team Championship, be adopted into the regular T.C.A. Calendar. Both amendments to the by-laws were passed unanimously with little discussion. It was brought out that there are about 40 women in the T.C.A.

McCarty moved that T.C.A. join USCF in offering a Family Plan. The pillar (or first) member of each family is required to join T.C.A. at the regular \$4 rate but additional members of the family (who do not wish to receive Texas Knights) may join for \$1. All members have the same expiration date. This passed easily.

McCarty's next proposal, for a "T.C.A. Gold Star Open Date Plan," was not received so well, probably because of its windy title. Finally it was resolved to have the T.C.A. Executive Board investigate and find about six dates during each year that will be set aside for local activities such as club or city championships, matches, team events, exhibitions, etc. No big tournaments will be held on those dates but whenever the large tournaments are held, they will be less likely to conflict with local events since local events will be concentrated on "Gold Star Open Dates." This proposal was especially needed by West Texas where there are several neighboring clubs.

David Katelansky complained that he hasn't received Texas Knights for two years although he was a paid member. Englebretson asked that such complaints be addressed in writing, along with any change of address, to the secretary-treasurer. (It should be noted that T.C.A. has changed printers and McCarty is now taking personal responsibility for addressing the T.C.A. bulletin. Weaver gets Texas Knights printed at Mission Press in Corpus Christi, sends 1,000 copies by bus to McCarty in Odessa, McCarty keeps a membership list current. Improvement is expected now that the old Dallas printers no longer have their meathooks on our mailing list. But we still have to depend on directors to send in all the memberships which they collect.)

Dante Pingenot stated that he felt T.C.A. should keep and publish a blacklist of persons who don't pay their tournament entry fees. The membership, which was growing restless as the starting time for the next round passed, made growling noises. Weaver reared up on his hind legs and stated that Lynn Babcock had complained a year ago that certain T.C.A. members had put 'stop payments' on checks to her for entry fees. He further stated that such practices would not be condoned but that he couldn't risk being sued for publishing the names of non-guilty persons. Lynn is the only tournament director who has had this problem. Weaver asked that if other T.D. have had similar experiences to please report it to the Secretary-Treasurer. The T.C.A. Executive Board promised to take action--what action depends on T.C.A. being furnished written indication of guilt, the reaction of the accused, and the wishes of the T.D. involved.

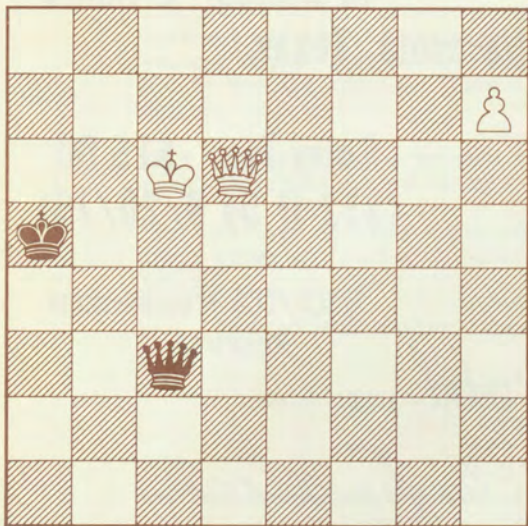
Weaver asked Englebretson to take a straw vote as to whether the membership of T.C.A. prefers a 24-page bi-monthly or a 12-page monthly bulletin. McCarty pointed out the difficulty in financing either unless we get more advertising. The vote indicated a preference for frequency.

The meeting was promptly adjourned.

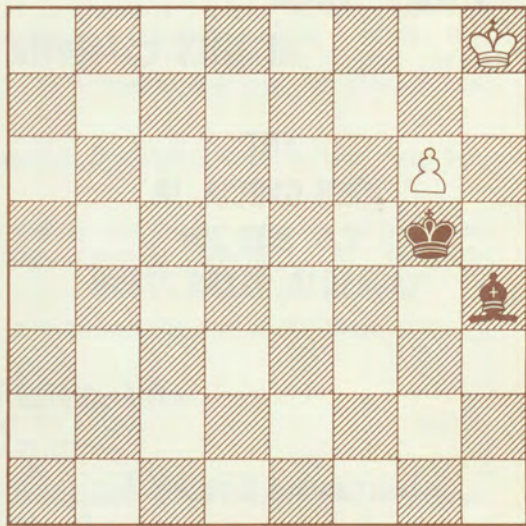


Brieger Says White Wins!
Simple Simon Says How?

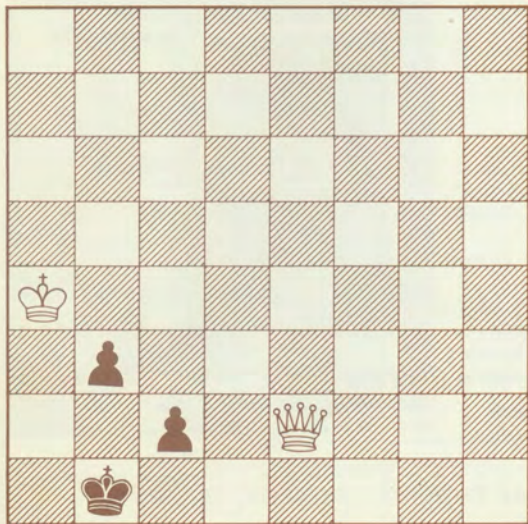
a.)



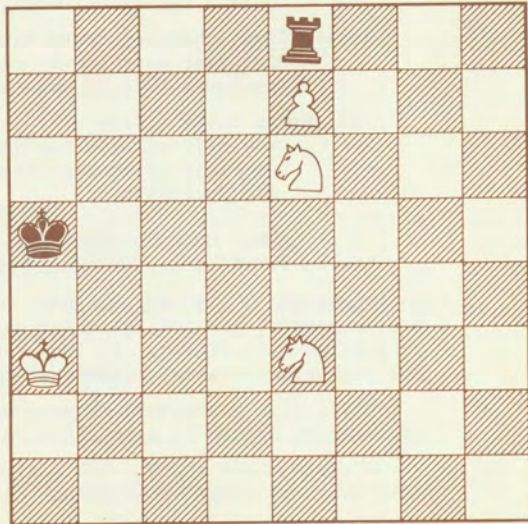
b.)



c.)



d.)



Answers will be in October issue. In case you need some hints; Robert says take two giant steps back if you think].) Qc5 Ch., b.) Pg7, c.) KxP, or d.) Nc4 Ch. solve anything!

GRIMES COUNTY OPEN

(September 27-28, 1975)

5 Rd./ Swiss

40 Moves/ 2 Hours

at NHS cafeteria in Navasota, Texas.

ENT:

JOHN GARCIA, JR.

P.O. BOX 704

NAVASOTA, TEXAS 77868

Entry fee: \$15.00
(\$12 if by 9/20/75)

USCF/TCA Memberships
Required

TCA GRAND PRIX EVENT

Tournament Directed by

John McLaughlin of Conroe

Want a new chess clock?

Heuer Chess Champion chess timers
One year warranty by manufacturer. \$44.95 postpaid.

BHB Extra chess clocks
Now offered with two year warranty by manufacturer. \$18.95 postpaid.

GERMAN BOXWOOD CHESS SET

"for a lifetime of tournament play"

King height 3 3/4 in., Staunton pattern, of scarce genuine boxwood, weighted and felted, in popular matt finish. In lacquered sycamore box with hinged cover; handcarved knightheads.

Satisfaction guaranteed or your money back if returned within 30 days. \$24.95 postpaid.



Send check or money order to Bill Wood, Box 52126 OCS, Lafayette, La. 70501.

Articles wanted: _____ Check for: _____

Name: _____ Address: _____

Please print plainly. State: _____ Zip: _____

DO YOU SINCERELY WANT
TO IMPROVE YOUR CHESS SKILLS ?

Now players of all strength can greatly improve their understanding of chess and learn how to develop the skills that win tournaments, by taking lessons from USCF Master, John Hall.

John Hall and MM Chess, present three (3) different chess correspondence courses by mail. There is a course of ten monthly lessons designed to instruct and benefit any player below Master strength. Course I is for the younger player and novice. Course II is for the intermediate player. Course III is for the seasoned tournament player (recommended only for Class B and above).

With each course, you receive ten thorough and highly instructive chess lessons, including graded tests.

Special rates on chess books and equipment, and the opportunity to have your chess games analyzed with notes and suggestions by John Hall. All for only \$49.50!

Some of USCF Master, John Hall's achievements are as follows:

TEXAS STATE CHAMPION - 1968
SOUTHWESTERN UNITED STATES OPEN CHAMPION - 1971
TEXAS STATE CHAMPION - 1973
AUTHOR OF CHESS BOOKS

You can now receive the kind of instruction that most people have only been able to receive through private lessons.

LET JOHN HALL GUIDE YOU, STEP BY STEP, ALONG THE ROAD TO CHESS MASTERY!

Mr. John Hall
M M Chess
P. O. Box 5568
Dallas, TX 75222

Dear John:

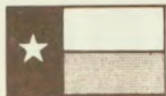
Please enroll me in your chess course for:

- () I. Novice (Fundamental concepts and basic techniques)
() II. Intermediate
() III. Advanced (seasoned player - recommended that student be of at least Class B strength or higher).

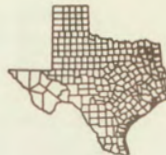
I have enclosed \$49.50 for the course I desire.

(Mr.)(Ms.) _____ Age _____
Street _____
City _____ State _____ Zip Code _____

Signed _____ Date _____



LONE STAR ROUNDUP



AMARILLO - The 1975 Texas Junior Championship held July 19-20 in Amarillo was won by Brian Klaus (1855) of College Station. Klaus scored 4-1 to nip Vernon Gaebler, who had 3-1/2 pts. for clear second. There were only eleven entrants but it was a highly competitive little tournament and the winner has reason to be proud of his achievement.

Bill Snead directed the Tall In Texas Open conjointly with the Junior Champ. This was a 36-player Swiss won by rising Lubbock star David Thomas (2199). Clarence Callaway was second.

HOUSTON - The HCC Invitational Class A Double Round Robin was won by Bill Reuter and Lee Gaskill (7-1/2 - 2-1/2). Robert Brieger was third with 7 pts.

The Houston Jr. Championship was won for the second year in a row by Bill Reuter (4-1/2 - 1/2). He 'gave' a draw to Steve Mount in the last round. Mount and Bill Stouffer each scored 4. David Holder and Jess Goodman scored 3-1/2 but were out of the money. Class C was won by Eric Leonard, David Epstein, Jeff Babcock, and Leza Sturdivant, all with 3 pts. Class D was shared by Terry Anderson and Mikhale Rogers. Danilo Toro took E and Larry Cloud, Unrated at the 26 player event directed by Lynn Babcock.

The 57 player Friday Night Swiss was won by John Hall (5-0). With four points were Fred King and W.R.C. Brassfield (A) and Clifford Rierson (B). Most talked about player at the tournament was John Lowe who took-C money by drawing Cliff Jewell (1842), beating Billy Patteson (1964), drawing Robert Brieger (1949), beating Lee Gaskill (1972) and then slowed down a little to draw Warren Brown, rated 'only' 1781. The T.D., Lynn Babcock, reports that when she asked Lowe what had happened to so improve his performance, he said he had decided to take chess a little more seriously. (John has been hanging around in Texas chess for several years.) Danilo Toro, from the country of Colombia, took first D, Tommy Harvey E, and Pele (his only name - but he is not the soccer player) took Class U.

Lynn Babcock reports that Houston C.C. now has 26 active players rated Class A and above. Many are young comers but there has also been improvement by players like John Lowe and Clifford Rierson plus several promising women players. Lynn hopes to be host to the playoff between Ruth Orton (Arkansas) and Ruth Herstein for the U.S.A.'s remaining spot in Women's Interzonal.

MIDLAND - Nathan Cypert of Odessa won the Tall City Open on tiebreaker over A. B. Hailey of Abilene. Eighteen players participated in the event directed by Bill Young. The group tied for third place at 2-1 were Midlanders Andy Lattu, Joe Castillo, Bill Knight, Rusty Riesele, along with Bill Green of Tennyson and Bill McCarty of Odessa. Players from Lubbock, Denver City, Big Spring, and Monahans also participated.

AMARILLO - Local expert Gary Simms swept to first place in the Amarillo May Open with a perfect score (5-0) ahead of Mike Fleming of Dumas (4-1). Other contenders were Bill Wheeler of Plainview (3-1/2 - 1-1/2) and Frank Fisher (3-1/2 - 1-1/2) of Amarillo. Wheeler was top A, Fleming top B, Brad Webster top C, Jeff Gideon top D, and John Jackson top Unrated. Bill Snead directed for the Amarillo Chess Club.

MALLEN - The McAllen Summer Swiss, August 2, was held in two eight man sections. A tough top section was won by Pan Am University Sports Information Director Jim McKone (1566) with a 3-0 score. Ron Steensland (1945) and Paul Townsend (1487) tied for second. The low section was taken by Joshua Turin's 3-0. Ken McClellan directed.

MERCEDES - The 10 player Last Minute Open directed by Paul Townsend was won by Jim McKone and unrated Enrique A. Garcia, both 3-0. Steve Alden and Josh Turin tied for third.

DALLAS - The Lone Star Open, Aug 2-3, was won by John Dunning, USCF master, with 4-1/2 - 1/2 when he beat Ken Smith in the last round. The man who drew Dunning, J. C. Thompson, tied for second with Ken. Clarence Callaway directed this first large non-CCLA event in Dallas in recent years. It was a Grande Prix tournament.

SAN ANTONIO - The Closed City Championship, Aug 2-3, was again won by Blake Stevens (4-1/2 - 1/2). Richard Spitzer, Boris Hackner, Mitchell White, and Dale Dike all scored 4 pts. at the tournament directed by Pete Prattes.

CORPUS CHRISTI - The 1975 City Championship was held Aug. 9-10 at the Jewish Community Center. Only residents who had scored well in previous open tournaments were eligible. The 8 man final section ended in a three-way tie between Joe Medina, Tom Weaver, and Glenn Escovedo at 3-1/2 - 1+1/2. A 32 player club rating tourney was won by Glenn's 4-1/2 - 1/2.

ODESSA - Recent T.C.A. events held by the Odessa Chess Club were the Greater Oil Basin Tornado won by Bill McCarty ahead of Nathan Cypert and Dr. Daryl Lane and the West Texas Rufnek Scrambler which was won by Cypert ahead of Danny Hardesty closely followed by McCarty and Russell Jones. Hardesty is a resident of Austin; Jones is from Portales, New Mexico, and all others are Odessans.

WICHITA FALLS - John Chapman directed the Wichita Falls Open August 16-17. James Rohrbaugh won the sixteen player Swiss.

The Ted Taylor Memorial drew eighteen players and ended in a two-way tie between Aubrey Rodgers and D. Stafford.

STILLWATER, OKLAHOMA - The North American Open, held annually in Stillwater just before the U.S. Open, was won by Elliot Winslow of Missouri with 10-1/2 - 1-1/2. Robert Brieger did best out of the Texas contingent; his 8-4 took the Class 'A' trophy.

LINCOLN, NEBRASKA - Lombardy and Benko scored 10-2 each to win the U.S. Open. Texans performed well: Joe Bradford - 8 1/2; Gary Simms, Robert Brieger, and Kevin Hammond - 8; Larry Englebretson, Billy Patteson, and David Thomas - 7 1/2.

TCA Grande Prix Leaders as of August 15

1. Ronald Henley, Houston	163
2. John Jacobs, Dallas	95
3. John Dunning, Dallas	90
4. Lee Gaskill, Houston	81
5. Eugene Kohnitz, San Antonio	65
6. Bill Reuter, Houston	43
7. Loren Meierding, Austin	42
8. Michael Condon, Austin	35
9. Robert Brieger, Houston	31
10. Mitchell White, Seguin	30
11. Gary Simms, Amarillo	27
12. Chris Brown, San Antonio	27



Corpus Christi City Championship==

LETTERS

1. Andy Lattu, Midland:

"Congratulations on your Texas Knights editorship. I hope you can get better cooperation...."

2. Bill McCarty, Odessa:

"For the last four hours I have been catching up on my T.C.A. business. The big item was sending out 200 expiration dates....

...the inclusion of some of these bits from time to time in a single column would add to the flavor of Texas Knights and would get away from the trend to be impersonal...."

3. Eric Bomgren, Sherman:

"Can you put me in touch with a nearby chess club or any Sherman-Denison area chess players...."

4. Antero Mencio, Houston:

"I like those little games you print in Texas Knights. Hope you keep printing them and more, if possible...."

5. Jim Sebesta, Austin:

"Bill (McCarty), would you please forward the enclosed letter to Richard King of Victoria after you add his address...I wish to compare French Defense notes with him...."

6. Ken Sund, McAllen:

"Congratulations on your appointment...as suggested, I am enclosing probably one of the more interesting games (not necessarily the best) that I had with Fred Stewart" in Texas Postal Championship Section 1-1 of 1974. F.S.-K.S.; 1. P-K4, P-QB4; 2. N-KB3, N-QB3; 3. P-Q4, PxP; 4. NxP, P-Q3; 5. N-QB3, N-B3; 6. B-KN5, P-K3; 7. Q-Q2, B-K2; 8. O-O-O, O-O; 9. P-KB4, P-Q4; 10. P-K5, N-Q2; 11. BxB, QxB; 12. N-KB3, N-N3; 13. Q-K1, B-Q2; 14. B-Q3, P-B4; 15. PxpP, QxP; 16. P-KN3, P-KR3; 17. P-KR4, QR-K1; 18. N-KN5!?, P-N3; 19. P-R5, PxN; 20. RPxpP, N-N5; 21. R-R6, NxN Ch.; 22. RxN, P-K4!; 23. Q-R1, KPxpP; 24. NXQP?, NxN; 25. RxN, B-B3; 26. P-N7, QxP(N2); 27. Q-R5, BxR; 28. R-KN6, R-K2; 29. QxNP, B-K5; 30. RxQ, RxR; 31. Q-K5, B-N3; 32. PxpP, R-K1; 33. Q-Q5 Ch., R-KB2; 34. Q-KN5, K-N2; 35. Q-QB5, P-N3; 36. Q-B3 Ch., K-R3; 37. Q-R3 Ch., B-R4; 38. Q-R4, R-KN1; 39. P-B3, R-N5; 40. Q-Q8, B-N3; 41. P-N4, R(5)xP; 42. K-N2, K-N2; 43. P-R4, R(2)-B3; 44. P-R5, PxpP; 45. QxP(R5), P-R3; 46. Q-B7 Ch., B-B2; 47. K-R3, R-B7; 48. Q-N3 Ch., K-B1; 49. Q-QN8 Ch., B-K1; 50. P-B4?, R(3)-B6 Mate.

7. Lynn Babcock, Houston:

"Well, at last! Texas Knights is back in shape...you're probably giving Pete Prattes an ulcer, though. He doesn't want 200 players (at S.W. Open). Said so, shaking his head, at the Houston Open. Also: for accuracy's sake, the S.W. Open has only had a top field of 216 (Houston, '73)--187 in the open section. In other words, not the "largest" annual tournament....

"Thanks for your overt threat to the bad check writers. Maybe that will shake them up a little.

"Houston news: Henley is on his way to Scandinavia to give H.S. exhibitions with most of the other juniors from the U.S. Junior Invitational...."

"Our next candidate-master, 14-year-old Bill Reuter, won a New Orleans tournament...his rating will be 2100+ when published by September. He hopes to make master this summer.

"Other juniors on the rise here are pushing Class 'A.' A bunch of them. All eyes are on our newest "little kid," Grey Rugel (12) who recently drew Billy Patteson and beat Lee Gaskill.

"John Hall is now our "in residence" master (literally lives in the club). He's teaching Novice, Intermediate, Class 'B,' and Class 'A' groups, and has a side job to eke out a living."

8. Royal Smith, Altus, Oklahoma:

"I enjoy Texas Knights very much. Believe it or not, it is my main source of information for avoiding tournament conflicts, since Wichita Falls is the closest place to Altus where tournaments are held."

9. Bill McCarty, Odessa:

"I thought your July-August issue was very satisfactory. I should be one who can judge the effect of an issue because (as T.C.A. Secr.-Treas.) I have had a recent deluge of renewals of memberships.

"P.S. On second thought, "deluge" is probably the wrong word but anyway quite a bit of money has come in the last week or so."

Editor's Note: Speaking of "wrong word," Bill, I hope you understand that when I referred to your "Top Woman Entree" in last month's issue--I meant she must have been quite a dish. Sorry.

10. Robert Brieger, Houston:

"Thanks for the plug of my book, Imagination in the Endgame....

"From time to time, I'll send you more fun chess."

11. D. Ballard, Tulsa, Oklahoma:

"In regards to your inquiry...as far as I know Mr. O. O. Ballard is no immediate relation.

"Secondly and of far greater interest is the following quote from Lasker's Chess Magazine, Vol. II, p. 101, July, 1905: Texas State Championship. The eighth annual championship tournament was played at the meeting of the Texas State Chess Association at Galveston in the early part of July and the honors fell to Mr. T. E. Lyons of San Antonio (sic), who won first prize with the good score of 10-1/2 pts. won, 1/2 pt. loss, his only draw game being with Johnson. There were eleven entries in the tourney, and there was a tie between Connor, Hollard, and Monnig in the places following the first prize winner, each having seven wins and four losses. Mr. Lyons won last year and retains the trophy for 1905.

"Under rules of the association Mr. Lyons as first prize winner is president of the association for the year. Mr. O. O. Ballard, of Houston, was re-elected secretary. The next meeting will be held July 3, 1906, probably at Ft. Worth. A vote of thanks was tendered to the Elks for use of their club room for the meeting of the association."

Editor's Note: Does anyone out there know what became of this ancient T.C.A. or its trophy?

12. Martin Morrison, USCF Technical Director:

"We have noticed from our files that you have been in correspondence with us concerning the question of amateur status in chess. The Policy Board of the U.S. Chess Federation at its meeting 19 April adopted an official definition of a chess professional, which may be of use to you in your promotional work. "A professional chess player is one who derives over 50 percent of his livelihood from his chess activities." All others are considered amateurs (by the U.S.C.F.).

"Please note that this definition, which can be quoted as the official one, may not be applicable in all activities. Even amateur players who participate in other activities, therefore, should make themselves familiar with the definitions of amateur and professional pertaining to the activities in which they participate. The definition, however, may help to clarify amateur status in chess to school boards and other agencies, as chess differs from other sports in its definition of a professional."

Editor's Note: Several inquiries to the University Interscholastic League in Austin have all been ignored by the guardians of football ensconced there. A call to the Corpus Christi School District brought this response from Asst. Superintendent Dr. Bliss, "The U.I.L. may penalize any high school student that plays in any event with a prize fund by refusing to consider the kid to be an amateur. This could prevent a student from receiving a scholarship."

13. Steve Alden, McAllen:

"A super big high school program is now being planned. We are going to have about five tournaments in the first three months of next year...to qualify for...Valley championship."

14. John Garcia, Navasota:

"You're right, our tournament got slighted, publicity-wise, last year. We hope to have a better turn-out this year. A half-page ad will be fine..."

15. Fred Townsend, Connecticut:

"The enclosed letter announces that I am campaigning for Vice President of the USCF in 1975...."

"P.S. Thank you for the postcard and your opinions!"

16. Lee Hyder, South Carolina:

"Thanks for the card, which was very heartening. I started out playing chess in Texas; one of my first tournaments was the Texas Open in Corpus Christi in 1954...I intend, if elected, to seek out the ideas and opinions of chessplayers from all parts of the country; I hope you and your colleagues in Texas will let me know what's on your minds..."

17. USCF Policy Board:

"The response to our letter of April 29 and to the Survey of Probable Attendance at our 1975 Annual Delegates Meetings was most disappointing. Only 166 Delegates--fewer than one-half of the 339 total--even bothered to complete and return the Survey!"

"We must change our By-laws to comply with the law by eliminating the use of proxies... the minimum Illinois quorum of one-third (113) Delegates actually present [is required] at this year's meetings."

18. Dr. Leroy Dubeck, USCF Immediate Past President:

"...108 Delegates have stated that they will attend the Lincoln business meetings, under the subsidy plan...it is still less than the 113 delegates we must have...I have therefore proposed that the Policy Board triple the stipend offered to each USCF Delegate in our June 10 Newsletter...plus complimentary room."

"P.S. I hope that you will attend the Lincoln meetings. It's important to have Texas well represented. About 12 By-laws proposals have been received by the Newburgh Office!"

"I strongly endorse Bobby Dudley (formerly of Texas)."

19. USCF Policy Board:

"By a margin of almost 20 percent, the 218 responses to our June 10 Survey of Probable Attendance...favored expense assistance in bringing Delegates to Lincoln over the alternate proposal of a telephone conference with a three-way hookup between Lincoln, Los Angeles, and New York City."

"...Your Policy Board, therefore, has unanimously agreed upon the following vigorous action...every Delegate in attendance will be provided with a complimentary room...the expense money has been tripled...now eligible to receive \$90, \$120, or \$150 [depending on travel distance to Lincoln, Nebraska]...come to Lincoln!"

20. Bobby Dudley, Pennsylvania:

"Thanks very much for sending the copy of Texas Knights. It is a very fine looking publication. I especially enjoyed seeing the photograph of Brieger and Simms. Gary has grown the beard since I last saw him and I would never have guessed it was him without the caption. Can you imagine a beard on a Texas Aggie? Gary attended A&M while I was there..."

"Frankly, it is good to have the campaign over..."

21. Bill Goichberg, New York:

"USCF Bylaws Proposal -

The basic idea of this proposal is to maintain our present electorate of about 340, while providing a group of about 135 to vote in person at annual meetings--the latter number being large enough to permit a broad base of representation but small enough to make a quorum easily attainable."

Editor's Note: The USCF Annual Business Meeting was attended by 186 Delegates, including all 9 from Texas. Bill Goichberg's proposal was passed after some haggling and amending. A similar proposal by Fred Townsend turned out to be second most popular while a very democratic proposal by Ed Edmondson that all USCF members be made voting members was third--it will probably pass in the near future if USCF members show enough interest.

22. Association of U.S. Chess Journalists:

"All members are urged to send samples of their work...."

Editor's Note: Texas Knights was on display with about 200 other very fine regional publications at this year's U.S. Open and U.S.C.F. Business Meeting.

23. Burt Hochberg, Editor of Chess Life & Review:

"...Chess Life & Review is a national publication, whereas others serve principally local or regional interests...since one of the most obvious ways to increase efficiency is by eliminating duplication, I suggest that it is inefficient for a tournament of purely local interest to be reported in both local and CL&R....

"The 'Chess Life, Here & There' department once consisted of a handful of events... but...in the 19 months from January 1974 through July 1975, local reporting occupied an average of 5.1 pages per issue, or more than 61 pages per year....

1) Tournaments of only local interest should be reported only locally....

2) CL&R should publish lists of local publications regularly....

3) CL&R should publish more material to instruct weaker players....

"The proposed new series by John Collins will help to ...keep USCF members rejoining... [now that he has finished] his excellent book, My Seven Chess Prodigies...."

24. Maria Iannitti, California:

"The United States Professional Chess Player's Association regrets to announce that applications for LIFE MEMBERSHIPS; at a one-time low fee of \$10.00, will not be accepted after June 16...."

25. Ed Edmondson, USCF Executive Director:

"We know nothing about the 'U.S. Professional Chess Players Assoc.', and have had no communication whatsoever from them. We have no idea what benefits they propose to offer in return for payment of membership dues to them. Apparently, however, they are making unauthorized use of addresses obtained from the pages of Chess Life; this does not instill us with confidence in their Association."

26. Ken Smith, Dallas:

"[Chess Digest] have not started advertizing in local papers because the cost usually does not bring in that amount of business."

27. Bill Wood, Lafayette, La:

"Please repeat my advertisement in Texas Knights. A check for \$25 is enclosed to T.C.A."

28. John Jacobs, Dallas:

"I have no objection to using any of my columns [from the Dallas Times-Herald, Sunday Edition) for Texas Knights...."



Fred Sorenson, Lynn Babcock



Ken Smith



Ed Edmondson



David Thomas, Bill McCarty



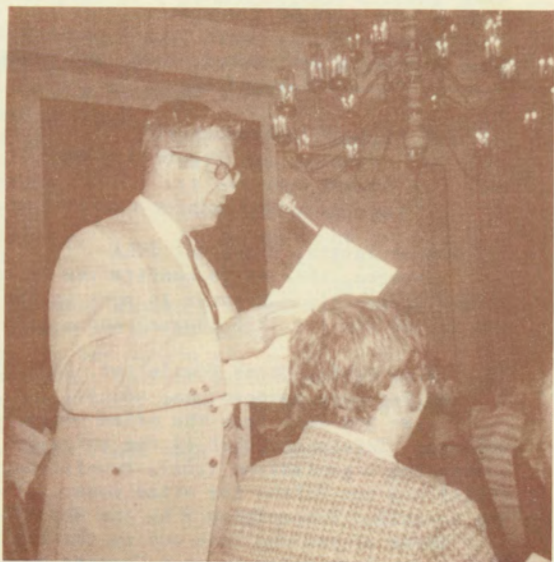
Texas Row



Policy Board Table



Bill Goichberg



Fred Townsend

29. Ken Hackney, Nacogdoches:

"Future Chess Plans -

"It is obvious that TCA has...great potential...happiness abounds on every side with TCA and CCLA, insofar as the tournament is concerned, but have to admit that there are some misunderstandings...Unfortunately, because of the fact that, while TCA sponsors the tournament, CCLA runs it. Hence the TCA Postal Director has no powers about tournament considerations, other than to make suggestions...During the past year or so, CCLA has undergone some rapid turnovers in its personnel...it is getting back to normal and will probably soon be growing rapidly, barring any further upheavals...The TCA has financial difficulties...Postal chess represents one of TCA's best sources of potential income...One alternative that has been advanced...is that TCA run its own tournaments without requiring membership in any National Organization....

"A second alternative is to continue...with CCLA as it exists. The CCLA, unlike USCF, is willing to try new ideas in chess...The third proposal to be advanced...allows somewhat greater latitude to the TCA while maintaining the yearly TCA/CCLA State Correspondence Chess Championship. In this plan, the TCA, as a postal affiliate...would be allowed to conduct its own inter-city and inter-Texas tournaments in which TCA membership only would be required. However, a portion of the entry fee would go to the CCLA for rating any player in such a TCA tourney, regardless of whether that player was already a member of CCLA or not...The results of such tournaments...would be published in Texas Knights...The writer feels that the last is the most feasible...."

30. Nestor Farris, President Correspondence Chess League of America:

"The State association sets the entry fee and prize fund, including distribution... The State association remits to CCLA \$3.50 for each entry plus the amount it (the state) desires to be used for prizes. CCLA will be responsible for administration, ratings, games reports, advertising in The Chess Correspondent, and awarding of prizes....

"Assuming a \$5.00 entry fee and 50 cents prize allocation, TCA will retain \$1.00 and remit \$4.00 to CCLA....

"I do not know what arrangements were made for the 1974 tourney, but Proposition F was passed by the CCLA Board of Directors in a form that would permit considerable latitude on the part of the State....

"In general, it costs CCLA a minimum of \$1.00 per entry plus 25 cents per player per game merely to administer, rate, and publish results...we have not yet worked out a formula for multi-round events."

31. Ken Hackney, Nacogdoches:

"All of you...have received a copy of this letter from Nes, in answer to mine, which you also have a copy of.

"If you can make heads or tails of it, you are a better man than I am...."

32. Nestor Farris, President CCLA

"Clarence, this is to confirm the import of our recent telephone conversation...I hereby personally guarantee to make up the difference between a lesser provision...and the \$70.00 for the 1974 tourney and a like amount for the 1975 tourney."

33. T.C.A. Postal Chess Newsletter, Vol. II, No. 3:

Ken Hackney, Nacogdoches, editor:

"...we now know that the prize money for the 1974 TCA/CCLA TCCC will be seventy dollars. This means that of the entry fee of five dollars, one-fifth went to the sponsoring organization (TCA), two-fifths to the organization conducting the tourney (CCLA) and two-fifths for prize money...I do not mind saying that I raised a fuss about the so-called Proposition F in the May '75 issue of CC....

"Those of you who lose out in the preliminaries will not go completely unrewarded, though, as I am going to send Charter Member Certificates of this first State/National Tournament in U.S. Postal Chess History to all of you who have completed your games...."

GAMES

State Co-champion Ronald Henley did very well at the World Open, July 2-6 in New York, tying for fourth place with a 7-2 record. Ron was undefeated, beating Watson (2310) and drawing his last four games with Matera (2458), Benko (2504, the tourney winner), Rossolimo (2404), and Denker (2386, former U.S. Champ). He then left for a chess tour of Scandinavia, but sent us a selection of games before departing.

'75 El Paso Open
 Ronald Henley (2260) - Mabel Burlingame (1755)
 Modern Defense

1. e4	c6			17. b3(f)	cxd
2. N-e2	d5	9. N-d2	f6	18. cxd	N-f7
3. e5	g6	10. f4	fxe	19. N-g5(g)	Nxg5
4. d4	B-g7	11. fxe	Rxf1 Ch.	20. Bxg5	B-d7
5. N-g3	N-h6(a)	12. Qxf1	Q-f8(c)	21. a3	a6
6. B-d3	N-d7(b)	13. N-f3	N-f5(c)	22. N-f4!	R-c8?
7. O-O	N-b6	14. N-e2!?	e6(d)	23. Nxg6	Resigns, since
8. c3	O-O	15. g4(e)	N-h6		if...hxg, 24. Bxg6 or
		16. Q-h3	c5		if...Q-e8, 24. N-e7 Ch.

- Probably...h5 should be played before this move.
- Best is...c5 with the idea of N-c6 and Q-b6 to pressure white's center.
- Trying to swap pieces in a cramped position is usually correct but notice how white avoids trading.
- Blocking the QB reminds one of the famous Tarrasch quote, "Cramped positions carry within them the germ of defeat."
- Increasing white's space advantage.
- Taking c4 from black's knight.
- Probably more accurate is the strategical plan of Q-g3 and h4, h5, forcing open lines with pawns rather than pieces.

Houston Sunday Swiss
 Ronald Henley (2260) - Billy Patteson (1989)
 Caro-Kann Defense

1. e4	c6	8. Q-e2	B-e7(b)	15. Bxd7	Kxd7
2. d4	d5	9. O-O	O-O	16. Qxe7 Ch.	K-c6
3. N-c3	dxg	10. N-e5	c5!(c)	17. Qxc5 Ch.	K-d7
4. Nxe4	N-d7	11. Nxf7!	Kxf7(d)	18. Qxf8	Qxf5
5. B-c4	e6(a)	12. Bxe6 Ch.	K-e8(e)	19. Ra-e1	b6
6. N-f3	Ng-f6	13. N-f5	g6?	20. R-e7 Ch.	K-c6
7. N-g3	Q-c7	14. B-f4(f)	Qxf4(g)	21. R-f7	Resigns

- More accurate is...Ng-f6, 6. N-g5 (to force e6 blocking in black's QB) e6, 7. N1-f3, h6, 8. N-h3 and white's QN is not so well placed as in the game.
- Worth considering is...B-d6 controlling the key square e5.
- Allowing a stock sacrifice, maybe on purpose. Correct is...N-b6, 11. B-b3, c5.
- Naturally...Rxf7, 12. Qxe6 wins the exchange but...N-b6, 12. N-g5 is also bad.
- Forced since...K-g6, 13. Q-d3 mates in two.
- A smashing deflection pseudo sacrifice makes black wish he'd moved 13...K-d8.
- If...Q-c6, 15. d5 is white's follow up.

'75 Texas Closed Championship, Houston
 Ronald Henley (2140) - Bill Reuter (1967 - at age 14)
 Sicilian Defense, round 1

1. P-K4	P-QB4	18. NPxP	P-KB4?! (d)	35. QxQ	QxP (4)
2. N-KB3	N-QB3	19. Q-N3 (e)	P-B5!	36. Q-N1!	QxP
3. B-N5	P-KN3	20. Q-K1	P-KN4	37. Q-N7 Ch.	K-N3
4. O-O	B-N2	21. R-N1	P-N5	38. Q-N6 Ch.	K-R4
5. N-B3	P-QR3	22. R-KB1	R-Q3	39. QxP Ch.	K-R5
6. BxN	QPxB	23. N-K2!?	P-B6 (f)	40. Q-K1 Ch.	P-N6
7. P-QR4	P-QR4 (a)	24. N-N3	R-R3?	41. QxP Ch.	QxQ Ch.
8. P-Q3	P-K4	25. N-B5	RxN	42. PxQ Ch.	KxP
9. B-K3	Q-K7 (b)	26. PxR	P-K5	43. P-Q5	R-R3
10. N-Q2	N-B3	27. P-Q4	P-QB4	44. R-N4	P-R4
11. N-B4	N-N5	28. P-QB3	Q-N4	45. P-B5	P-R5
12. N-N6	NxB	29. RxNP	PxQP	46. P-B6	R-R4
13. PxN	R-N8	30. BPxP	BxP	47. P-B7	R-B4
14. NxB	RxN	31. PxB	P-K6	48. R-N3 Ch.	K-B5
15. Q-N4! (c)	O-O	32. PxP? (g)	P-K7!	49. P-Q6	R-B8 Ch.
16. R-B3	QR-Q1	33. R-N8 Ch.	K-B2	50. K-N2	Resigns
17. P-QN3	P-B5	34. P-B4	PxR=Q Ch.		

- a. Prevents white from playing the cramping 8. P-R5.
 b. Simply P-N3 looks better.
 c. The idea is to prevent black from playing P-KB4--but to be consistent Ron should have continued QR-KB1 on move 17 instead of P-N3.
 d. Black also gets the initiative after...Q-N5, 19. N-Q1, P-QN4.
 e. PxP would lose a piece to P-K5.
 f. Better is QR-B3.
 g. Q-N3 wins easily.

Ronald Henley (2140) - John Jacobs (2334)
 Nimzo-Indian, round 3

1. P-QB4	N-KB3	7. O-O	N-B3	13. P-KB4	N-K2
2. N-QB3	P-K3	8. P-QR3	B-R4	14. P-KN4	N-K1
3. P-Q4	B-N5	9. BPxP	KPxP	15. P-KR3	P-B3
4. P-K3	P-QB4	10. Q-B2	P-B5	16. N-B3	B-K3
5. B-Q3	O-O	11. B-K2	P-QR3	17. P-QN4	Agreed
6. N-B3	P-Q4	12. N-K5	Q-Q3		Draw

Maria Ivanka (2301) - Ronald Henley (2140)
 Solokosky Opening, round 4

1. N-KB3	N-KB3	12. P-K3	R-K1	23. P-K4	NxP
2. P-KN3	P-KN3	13. R-B1	P-KR3	24. BxN	BxB
3. P-QN4	P-QR4	14. P-KR3	N-B1	25. NxB	RxN
4. P-N5	B-N2	15. P-Q4	B-B4	26. Q-KB3	RxR
5. QB-N2	O-O	16. Q-N3	P-K5	27. QxP Ch.	K-R1
6. B-N2	P-QB3	17. N-R2	P-KN4	28. RxR	RxR Ch.
7. P-QR4	P-Q3	18. QR-K1	B-N3	29. K-B2	R-K5
8. O-O	Q-B2	19. P-KN4	QN-Q2	30. N-B3	R-B5
9. P-Q3	P-K4	20. P-KB4	PxP e .p.	31. Q-K8 Ch.	R-B1
10. QN-Q2	QN-Q2	21. KNxP	R-K2	32. Q-K6	PxP
11. P-QB4	P-QB4	22. N-R2	QR-K1	33. K-N2	N-K4
				34. Time, black wins.	

Thanks to Bill Goichberg of the Continental Chess Association for sending us this one:

'75 World Open, N.Y.
Ron Henley (2222) - Pal Benko (2486)
Sicilian Defense

1. e4	c5	16. Q-e2	a6	31. N-e3	B-c5
2. c3	N-f6	17. B-g5	Q-e4	32. N-f1	B-g1
3. e5	N-d5	18. R(f)-e1	Qxe2	33. h3	f4
4. d4	Cxd	19. Rxe2	0-0-0	34. N-d2	f5
5. Qxd4	e6	20. K-f1	h6	35. C4	B-C5
6. N-f3	N-c6	21. Bxf6	gxf6	36. N-b1	B-d4
7. Q-e4	d6	22. R-d1	B-e7	37. N-a3	B-c5
8. N(b)-d2	dxe	23. Rxd8 Ch.	Rxd8	38. N-c2	b5
9. Nxe5	Nxe5	24. R-d2	Rxd2	39. N-e1	K-d6
10. Qxe5	B-d7	25. Nxd2	f5	40. N-c2	K-c6
11. B-d3	B-c6	26. K-e2	K-d7	41. N-e1	bxc
12. O-O	N-f6	27. K-d3	h5	42. Kxc4	e4
13. B-b5	Q-d7	28. b3	e5	43. N-c2	Agreed draw.
14. Bxc6	Qxc6	29. f3	K-e6		
15. N-f3	B-d6	30. N-f1	h4		

'75 Independence Open, Ft. Worth
Gary S. Rogers (1545) - Tom Moore (1980)
Ruy Lopez

1. P-K4	P-K4	15. BxN	BxB	29. N-B5	R-KB1(g)
2. N-KB3	N-QB3	16. R-Q1	Q-B4	30. RxP Ch.	K-R1
3. B-N5	P-KB4(a)	17. N-Q7	BxN	31. R-N5	P-R5
4. P-Q4(b)	PxKP	18. RxB	QR-K1	32. N-K3	R-B5
5. BxN	QPxB	19. Q-B3	R-B3	33. R-N4	BxN
6. NxP	N-KB3(c)	20. Q-Q4	QxQ(e)	34. PxB	RxR
7. O-O	B-K2	21. RxQ	P-QN4	35. PxR	K-N2
8. P-QN3(d)	O-O	22. N-K3	B-Q3	36. K-R2	K-N3
9. B-N2	B-KB4	23. P-QR4	P-QR3	37. K-R3	K-N4
10. N-R3	N-Q4	24. R(1)-Q1	P-KR4(f)	38. P-N3	PxP
11. N(3)-B4	B-KN4	25. P-KR3	B-B4?	39. KxP	P-R4
12. Q-K2	N-B5	26. R-Q8	R(3)-B1	40. P-B4	PxRP
13. Q-K1	B-R3	27. RxR	RxR	41. PxP	P-B4
14. B-B1	QxP	28. R-Q7	B-N3	42. K-R3	P-B3
				43. K-N3	Resigns

(a) The Schlieman Defense.

(b) MCO gives 4. P-Q3 as the safest reply.

(c) MCO and FIDE-C1 give 6...Q-R5!

(d) The bishop is usually developed at N5.

(e) After 20...Q-KR4!, black is my favorite.

(f) 24...R(1)-KB1! presents problems to white.

(g) 29...P-N3 gives white the draw with N-R6 Ch, but this would have been preferable to the text!

Although Blake Stevens rarely plays outside of San Antonio it is no surprise to veteran T.C.A. members to hear that Blake has won that city's 1975 Invitational Championship. In fact, this is the fifteenth time he has won that honor since 1948. Blake also has won the Texas State Championship in 1954 and 1958 plus the 1957 Southwest Open and the 1960 and 1961 Alamo Opens. Here are his annotations of a recent game.

'75 San Antonio City Championship
 Blake Stevens (2038) - Boris Hackner (1758)
 Old Indian Defense

- | | | | | | |
|-------------|-------|--------------|--------|---------------------------|------|
| 1. N-KB3 | N-KB3 | 9. PxP | NxP | 17. Q-B1!(c) | N-N3 |
| 2. P-QB4 | P-Q3 | 10. P-QN4(b) | NxB | 18. NxRP | RxN |
| 3. P-Q4 | B-N5 | 11. QxN | Q-O | 19. P-R5 | NxP |
| 4. N-QB3(a) | BxN | 12. QR-N1 | Q-Q2 | 20. BxR(e) | N-Q7 |
| 5. KPxB | P-KN3 | 13. P-QR4 | KR-QB1 | 21. RxR Ch. | QxR |
| 6. B-K3 | B-N2 | 14. KR-B1 | Q-KB4 | 22. Q-B1 | B-B6 |
| 7. B-Q3 | QN-Q2 | 15. Q-K2 | Q-K3 | 23. R-N2 and White won in | |
| 8. O-D | P-QB4 | 16. N-N5 | N-Q2 | 12 more moves. | |

4. QN-Q2 or P-K3 are preferable.
- No future on the K-side or in the center compels this course.
- Sets a trap. Although black does not like, now, 17...P-QR3; 18. N-Q4, Q-B3 (or even 18...BxN), still it is best, as white has yet to demonstrate progress on the Q-side.
- Seems playable for two reasons: (1) if 18. BxN?, PxB and black is better; or, (2) if white goes in for the combination, isn't there a countercombination with ...NxP and N-Q7 regaining the exchange with complete equality? See what happens!
- If black could win back the exchange, white's Q-side majority would be offset by black's superior piece placement and protected passed pawn.

'75 Austin Chess Club Championship
 R. Stachowitz (2300) - John Bell (1891)
 Pirc (by Transposition)

- | | | | | | |
|-----------|--------|-----------|---------|-------------|---------------|
| 1. P-K4 | N-KB3 | 14. RxN | P-KR3 | 27. N-N4 | P-QN4 |
| 2. N-QB3 | P-Q3 | 15. KN-K4 | NxN | 28. RxB | PxR |
| 3. P-Q4 | P-KN3 | 16. RxN | P-Q4 | 29. QxP Ch. | K-R1 |
| 4. P-B4 | B-N2 | 17. R-K3 | Q-B3 | 30. QxKP! | R-KN1 |
| 5. P-K5 | KN-Q2 | 18. B-N2 | Q-N3 | 31. P-B3? | QR-K1 |
| 6. N-B3 | O-O | 19. N-Q1 | B-Q2 | 32. O-Q6 | R-K8 Ch. |
| 7. B-K3 | P-QB4? | 20. R-N3 | Q-B3 | 33. FxP | R-K7 Ch. |
| 8. P-K6! | PxKP | 21. N-K3 | P-QR4 | 34. K-N1 | Q-R6 |
| 9. N-KN5 | PxP | 22. R-Q1? | P-R5 | 35. Q-Q2 | RxQ |
| 10. BxP? | N-KB3 | 23. R-N4 | P-R6 | 36. RxP | QxBP |
| 11. Q-K2 | Q-Q2 | 24. NxP | PxP Ch. | 37. N-B2 | O-N7 Mate. |
| 12. P-KN3 | N-B3 | 25. K-N1 | Q-B4! | | A wild affair |
| 13. O-O-O | NxB | 26. R-B4 | Q-R4? | | |

There were 164 Class 'A' or higher rated players among the nearly 400 entrants in this year's U.S. Open. The highest player from Texas was David Thomas of Lubbock whose rating should have been over 2200. For some reason, not known to Professor Elo when the Texas delegation asked him about it, a USCF rating statistician had frozen David's rating at 2199 supposedly because he hadn't been playing other experts and masters to gain his high rating.

'75 U.S. Open, Lincoln, Nebraska
Walter Shipman (2302) - David Thomas (2199)

1. N-KB3	N-KB3	13. K-B1	B-QB4	25. KxR	BxP
2. P-QB4	P-QB4	14. BxB?	NxB	26. K-N2	P-KN4
3. P-Q4	PxP	15. P-B3	R-QR1	27. K-B1	K-Q3
4. NxP	P-Q4	16. P-QN4 (c)	RxN	28. K-Q2	K-B4
5. PxP	NxP	17. PxN	K-K2	29. K-K3	B-B3
6. P-K4	N-B2! (a)	18. P-QR4	B-Q2	30. P-N3	K-B5
7. N-QB3	P-K4	19. B-Q3	R-QB1	31. P-B4	P-B3
8. N(4)-N5	QxQ Ch.	20. B-B2	RxBP	32. PxNP	PxP
9. KxQ	NxN	21. K-N2	R(4)-QR4	33. P- R4	PxP
10. NxN	N-R3	22. KR-QB1	P-QN4	34. PxP	K-B6
11. B-K3	B-K3!	23. PxP	RxR(d)		Draw Agreed
12. NxRP(b)	R-Q1 Ch	24. RxR	RxR		

(a) Grandmaster Pachman lists this as the only move.

(b) White should consider BxP here or maybe 13. K-K2 is the improvement needed.

(c) Black threatened N-N6 Ch.

(d) Chasing white's king is possible but also drawish.

Seven times Southwest Open Champion J. C. Thompson of Dallas writes that he is "not trying to out-lask Lasker, but I can certainly emulate Emanuel."

Here he shows that he still has teeth in a game that Ken Smith called "beautiful." Mr. Thompson admits that "the final combination was rather cute."

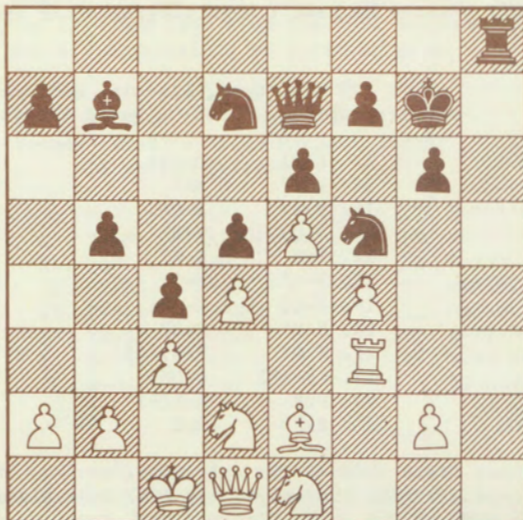
'75 Lone Star Open, Dallas
E. McClary (1963) - J. C. Thompson (1827*)

1. P-K4	P-K4	11. PxB	P-B5	21. Q-Q3	P-B6
2. N-KB3	N-QB3	12. P-B4	B-N5	22. R-Q1	N-K7 Ch.
3. B-N5	B-B4	13. PxP	BxN	23. K-B1	PxP Ch.
4. P-B3	P-B4	14. QxB	NxP(5)	24. KxN	QxQ Ch.
5. P-Q4	KPxP	15. Q-Q3	NxB	25. KxQ	QR-Q1 Ch.
6. P-K5	KN-K2	16. QxN	QxP	26. K-K2	RxR
7. PxP	B-N5 Ch.	17. R-N1	P-QN3	27. PxP	P-N8(Q)
8. N-B3	P-Q4	18. P-QR4	P-B4	28. P-B4	Q-B8 Ch.
9. O-O	O-O	19. P-R5	N-B3	29. K-K3	R-Q6 Ch.
10. P-QR3	BxN	20. PxP	N-Q5	30. Resigns	

*Another rating blunder by USCF.

Dallas, 1975
Notes by John Hall, USCF Master

Tim Hansen (1490)



David J. Smith (1551)

23. P-KN4!	N-R5	32. K-K2	RPxP	41. RxN	RxR
24. R-B2	P-KB4?	33. RPxP	BPxP	42. QxR	QxQ Ch
25. P-N5!! (a)	K-N1	34. NxP	N-R5	43. KxQ	B-Q2
26. R-R2	R-R2	35. R-R3	N-QN7	44. NxB	KxN
27. N-B2	Q-KN2	36. N-B5	B-B1	45. B-K2	K-K2
28. Q-R1	Q-R1	37. N-K3	N-B5	46. B-R5	K-B2
29. K-Q1!	P-R4	38. NxN	NPxN	47. BxP Ch	KxB
30. B-B1	N-N3	39. K-B2	K-B2	48. K-N3	and White won (c)
31. P-N3	P-R5	40. K-N3(b)	K-K2		

(a) A cunning idea. White shuts off his potential breakthrough on the kingside, but he can now win the errant knight on KR5 by force! The procedure involved is original in that the white king plays a key role.

(b) Mission accomplished!

(c) David Smith has a small wager with Dr. Brock, his employer, that David will collect if one of his chess games is published.



GRANDE PRIX: A tourney that counts toward the TCA Grande Prix Championship. The individual who accumulates the most Grande Prix points/yr will be sponsored to a national event



From The Dallas Times Herald, July 27, 1975, Features Section: An Example of the Weekly Column by John Jacobs, USCF Master.

Most grandmasters recognize the necessity of varying their opening repertoire in order to avoid falling into a "prepared variation." Knowing what opening to expect from his opponent gives a player a much better chance of ambushing his predictable foe with a home-cooked innovation.

But sometimes the preparation can take a more bizarre form. An amusing incident once occurred at a Dallas chess club involving a player who was well known for his exclusive use of the English Opening (1. P-QB4). Before one encounter his enterprising opponent glued the queen bishop pawn to its original square. When the English fanatic showed up to play, he practically shoved the chessboard off the table trying to make his favorite first move.

One fault of the current United States Champion, Walter Browne, is his unwavering adherence to the Najdorf Variation of the Sicilian Defense. Browne even refers to the Najdorf as "my defense." But in the 815-player World Open, Browne had to pay for his chess sin. He sustained a stunning upset at the hands of the well prepared 15-year-old Michael Rohde--the youngest U.S. player since Bobby Fischer to achieve a 2300 rating.

'75 World Open, N.Y.
Michael Rohde (2305) - Walter Browne (2586)
Sicilian Defense

1. P-K4	P-QB4	14. PxP	PxP	27. R-R8	R(6)-B1
2. N-KB3	P-Q3	15. Q-Q3	B-R3(f)	28. RxR	RxR
3. P-Q4	PxP	16. R-R3	Q-B2	29. P-QB3	P-K5
4. NxP	N-KB3	17. KR-R1	Q-N2	30. R-R6	K-B2
5. N-QB3	P-QR3(a)	18. P-QN4!(g)	N-N3	31. R-N6	B-B3
6. P-KN3!(b)	P-K4	19. BxN	QxB	32. RxQP	BxP
7. N(4)-K2	B-K2	20. Q-K3!	Q-N2(h)	33. R-QB6!(k)	RxR
8. B-N2	QN-Q2	21. R(1)-R2!(i)	P-B4	34. PxR	B-K4
9. P-QR4(c)	P-QN3	22. Q-QB3	P-B5	35. N-Q4!	K-K2(1)
10. O-O	B-N2	23. Q-B6	P-B6	36. NxP	B-N7
11. N-Q5	NxN?(d)	24. BxP	QR-B1	37. K-B1	K-Q1
12. PxN	P-QN4(e)	25. QxB	QxQ	38. K-K2	B-B8
13. B-K3	O-O	26. RxQ	RxB(j)	39. K-Q1 and won.	

- (a) Reaching the characteristic Najdorf position.
 (b) Psychologically well motivated. Browne is more familiar with the popular moves 6. B-KN5, 6. B-K2, and 6. B-QB4.
 (c) Restraining black from queenside expansion by ...P-QN4.
 (d) Dubious, as black later has trouble finding a suitable diagonal for the queen bishop. 11...BxN seems preferable.
 (e) Browne wants to advance the queen knight pawn to QN5 in order to secure the QR3-KB8 diagonal for his bishop, but this plan leads to the isolation of black's queen knight pawn.
 (f) The weakness of black's QNP forces his pieces to passive positions and allows white a free hand to dominate the queen rook file.
 (g) Taking away the QB4 support point from black's knight and suffocating black's queen bishop.
 (h) White invades after 20...QxQ; 21. PxQ, B-N2; 22. R-R7.
 (i) The maneuver 22. Q-QB3 followed by 23. Q-R1 is a threat.
 (j) White has won a pawn, and black's QNP and QP remain weak. Now "the kid" shows his technique.
 (k) Simplifying and leading to the win of another pawn.
 (l) Not 35...BxN; 36. P-B7, and the pawn queens.

Good Humor From West Texas

Recently, at a meeting of the Odessa Chess Club, Morty Schaffer of Norwalk, Connecticut, decided to visit and remember the old days when he worked as a copy boy for Al Horowitz's Chess Review. Morty grew up in New York City, and knew many of the best players in the world of that time when N.Y. was dominant on the world scene. He said that Horowitz paid him \$15 per month for part time help. Once, when his finances were in bad shape, he asked Horowitz for a \$10 raise. Horowitz refused on the principle "that no employee should get a raise just because the guy needs the money."

Al sat Morty down and taught him a Horowitzian lesson in economics. "Look, Morty, the only way any employer gives a raise is because that employee is worth more than he is being paid. If you can prove to me that your worth is \$25 a month, then you get the raise." Morty studied the proposition, and after regrouping his thoughts, he convinced Al that he was indeed worth the extra money and that he should get his raise.

Along with tales of Horowitz, Morty knew Arthur Bisquiere, Arnold Denker, Sammy Reshevsky, and Reuben Fine as well as many other chess household names.

The most unusual game on record occurred in Odessa in 1917 between two chess prodigies, Harlow Ponce, aged three, of Great Britain, and two-year-old Agon Kmitch of Russia. The special nature of the conflict becomes evident in the opening moves:

White (Ponce)	Black (Kmitch)
1. P-Q4	P-Q4
2. P-Q2!	P-Q2
3. P-Q3	P-Q3
4. P-Q2	P-Q2!

An attractive exchange, showing the two masters displaying caution and aggressiveness.

The Englishman now unleashes the Machiavellian ingenuity that caused Levitch in later years to award him the sobriquet "that little vonce."

5. P-Q6!

The spectators were so stunned that they showered the board with gold pieces and Ponce was awarded a brilliancy prize and a trip over Petrograd in a gas balloon. Black's response

5. R-Q9!

demonstrates that Kmitch, though still on soft foods, was nevertheless a poet of the chess-board. His unusually placed rook was clearly an attempt to intimidate Ponce's queen or possibly Ponce himself, who Kmitch knew had a pathological fear of end-pieces. (Until his death in 1950, Ponce persisted in the belief that he was being stalked by a black rook and could not sleep unless a white pawn was placed at each of the corners of his bed.)

Ponce, now visibly under pressure, sets an unsuccessful trap for Kmitch's bishop, using a small noose of thread baited with cheese. Play continues in this fashion until:

17. KxB !?

The incredible subtlety of this move was grasped by only one observer present, ex-grandmaster Smednick, who refused to explain it because he felt he had been given a poor seat. Kmitch's reply, however, reveals his immaturity:

17. PxN Ch.??

Shocking; under other conditions quaintly humorous, if not for the tragic overtones! Black greedily snatches at the chance to humiliate white's bishop and even gets in a nasty remark about his wardrobe. But to no avail. Clearly in command, white now offers the ominous:

18. Three no-trump

Only a fool or a genius would dare such a move; Ponce being both, had no choice.

At this point, the match was rudely interrupted by the Russian Revolution, which started early when Kerensky unexpectedly obtained two tickets to a musical. When the principals met again in 1936 to resume play, only 12 of the 32 chessmen could be found and the game was recorded as a draw.

Thanks to the folks out west for these interesting reports. No one else sends in stuff like this!

STATUS REPORT ON COMPUTERIZATION

by

Eric Bone,

USCF Computer Manager and Long-time City of Houston Chess Champion

The project to computerize the operation of the USCF business office is being carried out by Shared Educational Computer Services, Inc (SECOS) of Poughkeepsie, New York. SECOS is a non-profit computer corporation which offers programming and timesharing services to other non-profit institutions in the mid-Hudson and New York City areas. This company originally grew out of an IBM fellowship grant. The system which they are developing for the USCF will provide the business office with high-speed keyboard/CRT (TV tube) terminals and a printer terminal communicating directly with an IBM 370/145 computer. All of the day-to-day operations of the membership/subscription department and the rating department will be performed in an on-line mode.

The implications of the new system for Federation members are numerous, some quite visible while others, such as an increase in the speed and accuracy of response from the business office, might be less obvious but are no less important. The most direct ways in which computerization will be seen outside the office will be: (1) each member's up-to-date rating will appear on his or her magazine label; (2) each member will be assigned a permanent membership number which will appear on his or her magazine label and membership card, these numbers to be used in all Federation transactions including rating reports; (3) crosstables in final rank order with new ratings will be available to tournament directors and to editors of chess publications; (4) selected (state, regional, etc.) mailing lists and rating lists will also be available.

The overall cost of the new system to the USCF can be fairly well estimated at this point, although the exact figures won't be known until the project is complete. The one-time start up cost of the system will come to about \$50,000. The ongoing cost of the combined membership and rating systems (plus miscellaneous peripheral services) will be about \$6,500/month which also includes the salary of the Computer Manager. However, the new system will replace approximately \$5,000 worth of monthly services, salaries, and supplies which exist under the present system, so that the extra cost comes to only about \$1,500/month. It should be noted here that this "extra cost" figure would be considerably lower or non-existent had it not been for the slack membership period which the Federation has been going through during the first half of 1975. As this implies, the new system is set up with the flexibility and capacity to handle a considerable increase in membership.

COMING ATTRACTIONS



September 13-14 Midland Open

5-SS, 4 5/2, Roadway Inn, I-20, Midland, EF: \$15, USCF and TCA. PRIZES (based on 40 entries) (all EF will be returned--prize fund increased if entries permit) \$125-75-40, A 40, B 40-25, C 40-25-15, D/E 40-25-15, U 20. REG: 8-9:30 a.m., 9/13, rds. 10, 3, 8, 8:30, 2. T.D. Bill McCarty. ENT: Andy Lattu, 1402 Murray, Midland, TX 79701.

September 20 Javelina Open Kingsville

3-SS, eight-man sections, Texas A&I Student Union, Kingsville - EF \$3, USCF/TCA required. Trophies to section winners. ENT: Bruce Payne, P.O. 2343, Kingsville 78363.

September 27-28 Grimes County Open Navasota

5-SS, 40/2, N.H.S. cafeteria, EF: \$15, \$12 if by 9/20, USCF and TCA required. PRIZES (based on 40 entries) \$100-75, A \$50, B \$50, C \$40, D \$30, E \$30, Unr \$25, Woman \$25, trophies. REG: 8-9:30 a.m., 9/27, rds 10, 2, 7, 9, 2. ENT: John Garcia, Jr., P.O. 704, Navasota 77868. GRANDE PRIX!

September 27-28 Abilene Fall Open

5-SS, 4 5/2, Thunderbird Lodge-East Highway 80, Abilene. EF: \$15 or \$12.50 in advance, USCF and TCA required. PRIZES: Cash based on number of entries, trophies to class winners if over 50 entrants. REG: 8-9:30 a.m., 9/27, rds 10, 2, 7, 9, 2. T.C.: Bill McCarty. ENT: Boyd Rogers, 2642 Garfield, Abilene TX 79601.

November 8 Lubbock Rating Tourney

3-SS, send inquiries to David Thomas, 2806B 22nd Street, Lubbock TX 79410.



T.C.A. CALENDAR

Sept. 13-14	Midland	5 rd SS
Sept. 20	Kingsville	3 rd SS
Sept. 27-28	Abilene	5 rd SS
Sept. 27-28	Navasota	5 rd SS
Oct. 11-12	Ft. Worth	5 rd SS
Oct. 18-19	Amarillo	5 rd SS
Oct 25-26	Corpus Christi	5 rd SS
Nov. 8	Lubbock	3 rd SS
Nov 8-9	Wichita Falls	5 rd SS
Nov 28	Lake Brownwood	3 rd SS
Nov 29-30	Lake Brownwood	5 rd SS
Dec 6-7	Amarillo	5 rd SS
Dec 26-28	Ft. Worth	6 rd SS
Jan 31-Feb 1	Midland	5 rd SS

October 25-26 South Texas Open Corpus Christi

5-SS, 45/2, Hilton Inn, 6255 IH 37 (Corn Products Road Exit), Corpus. EF \$15, or just \$10 if sent in advance with request for room reservation at Hilton to Tom Weaver, 4506 Carroll Ln., Corpus 78415. PRIZES (based on 50 entries, if 12 at Hilton, no ballroom rent) \$125 + trophy, \$75, Ex \$50, A \$50-20, B \$50-20, C \$50-20, DE \$50-20, Unr \$50-20, REG: 9-10 a.m. 10/25, rds 10, 2:30, 7:30, 9:30, 2:30. GRANDE PRIX!

November 28-30 Texas Team Chess Congress and 1975 Texas Open Lake Brownwood

See advertisement on opposite page.
GRANDE PRIX!

Key To Abbreviations

CC: Chess Club
EF: Entry Fee
ENT: Where to send entries
REG: Registration period
SS: Swiss System Pairing
TL: Time limit.



TEXAS CHESS ASSOCIATION

2615 BUCHANAN

ODESSA, TEXAS 79763

BILL McCARTY
Secretary-Treasurer

Flagship Resort Motel and Marina

On Beautiful

Lake Brownwood

November 28, 1975

TEXAS TEAM CHESS CONGRESS

3-SS, 4 man teams, 45/90

EF: \$ 25.00 per team
USCF/TCA

Each team will be comprised of four players (a fifth player may be designated altermate) whose combined ratings may not exceed 7599 USCF rating points. For this event, all USCF Masters shall be considered as "2200"; all unrated players shall be considered as "1400"; and all Class E players shall be considered as "1200!"

Individual players may be assigned to teams by the tournament director. The entry fee for individuals is \$ 6.25.

Reg: 8:00 AM to 9:30 AM
Rds: 10:00 2:00 7:00

Cash Prizes: \$ 100 to 1st place team
75 to 2nd place team
50 to 3rd place team

Prizes based on 10 entries. Prizes to increase if more entries permit.

Medals to top players on each board.

Team match points will be considered in deciding the winning teams. Each team win will count 1 point; each tie will count 1/2 point; and a loss scores as 0 points.



November 29 & 30, 1975

THE 1975 TEXAS OPEN

5-SS, 40/2

EF: \$ 15.00 if received by 11/21
20.00 if later

The tournament is open to all USCF players who are members of the TCA. Residents of Loisiaana and New Mexico who are members of their respective state associations are not required to join TCA. Players who joint USCF-TCA for the first time may do so for \$ 31.00 (adult) and \$ 24.00 (junior).

CASH PRIZES: \$ 200.00 1st
100.00 2nd
75.00 3rd



\$ 70- 40 Expert
70- 40 A Class
70- 40 B Class
70- 40 C Class
70- 40 D/E Class
50- 25 Unrated

Prizes based on eighty entries. Cash prizes to increase in direct proportion to additional entries.

Reg: 8:00 AM to 9:00 AM
Rds: 9:30 2:00 7:00
9:30 2:00

Note: Modified Swiss pairings will be used in Round 1 and 2.

""GRAND PRIX EVENT""

Mail entries to: Bill McCarty, address above. Indicate USCF Rating and expiration dates of memberships. Be sure to bring your own chess set, pieces, and clock.

TOURNAMENT HOST: Abilene Chess Club

TOURNAMENT CHAIRMAN: Boyd Rogers

TOURNAMENT DIRECTOR: Bill McCarty, C.I.D.

ASSISTANT DIRECTOR: Gary Rogers, L.T.D.

TEXAS CHESS ASSOCIATION

The T.C.A. is a non-profit organization for the promotion of chess in Texas, and is the state affiliate of the U.S. Chess Federation. Texas Knights is the official publication of the T.C.A.

Membership in T.C.A. is available to any Texas resident and gives the member voting rights and a subscription to Texas Knights. Associate membership is available to non-residents without voting rights. Dues are \$4/year except \$3/year for juniors (under 18) and persons joining under the Family Plan (\$1/year for right to vote and play in T.C.A. tourneys but no subscription since one family member must already be receiving Texas Knights. This membership class is available only from the T.C.A. Sec.-Treasr.).

Please send all membership applications, renewals, and changes of address to the Sec.-Treasr., address below.

Elected T.C.A. Officers:

President: Larry Englebretson
4413 Mandell, Houston, TX 77006
Vice-Pres: Jack Taylor
315 Lakeside Drive, Channelview,
TX 77530 (713-452-7260)
Secr.-Treasr: Bill McCarty,
2615 Buchanan, Odessa TX 79763
(915-337-4732)
Immediate Past Pres: Clarence Callaway, Jr.
Box 1576, Irving, TX 75060

Appointed T.C.A. Officers:

Director fo Texas Junior Chess:
Lindsay Phillips, 4621 Sun Valley
Dr., El Paso, TX 79924
Director of Texas Postal Chess:
Kenneth Hackney, 306 Northgate
Drive, Nacogdoches, TX 75961
Director of Texas Grande Prix:
Jim Martin, 804A Linwood,
Victoria, TX 77901
Editor: Tom Weaver
4506 Carroll Ln, Corpus
Christi, TX 78415 (512-853-8246)

TEXAS KNIGHTS

Contributions of general chess material are encouraged. Games, articles, letters, reports, and announcements of T.C.A. tournaments will be considered for publication.

Advertising rates are \$45 for full page, \$25 for half page. Contact Editor, address above, for information. Deadline for next issue is October 12, 1975.

Return Address:
Bill McCarty
2615 Buchanan
Odessa, Tex. 79763

*Eugene Kohnitz
4462 Walgreen Rd.
San Antonio, TX 78218*

